



Inscription plaque of Andrzej Potworowski
of Sienno Dębno coat of arms
accession no: MZW/AH/24

The exhibition "Soli Deo Gloria. Protestant Cultural Heritage in the Wschowa region in the 16th-18th century." was modernized in 2014 owing to the support of the Ministry of Culture and National Heritage within the "Cultural Heritage – Support of museum activities" programme.

The project was co-financed by the local government – Wschowa Municipality.

Modern audiovisual display and lighting systems have been used to highlight the artifacts' timeless beauty of the past.

An electronic version of the exhibition catalogue has also been created presenting the museum collections as a valuable research material.

A significant part of the displayed artifacts, for instance, coffin portraits, epitaph and coat of arms plaques connected with the Wschowa region gentry underwent conservation in 2013 within the same programme run by the Ministry of Culture and National Heritage. The obtained high esthetic value of the artifacts, the protection of the original elements against slow degradation and, finally, the digitalization play an essential part in the preservation of the local cultural heritage.

MODERNIZATION OF EXHIBITION

SOLI DEO GLORIA – PROTESTANT CULTURAL HERITAGE IN THE WSCHOWA REGION IN THE 16TH – 18TH CENTURY

Project co-funded by the Ministry of Culture
and National Heritage
within the "Cultural Heritage –
Support of museum activities" programme.

Section of the exhibition Soli Deo Gloria



WSCHOWA LAND MUSEUM

Pl. Zamkowy 2 67-400 Wschowa
tel. 65 540 74 61

www.muzeum.wschowa.pl

sekretariatmuzeum@wschowa.pl

www.facebook.com/muzeumziemiuschowskiej



MUZEUM ZIEMI WSCHOWSKIEJ

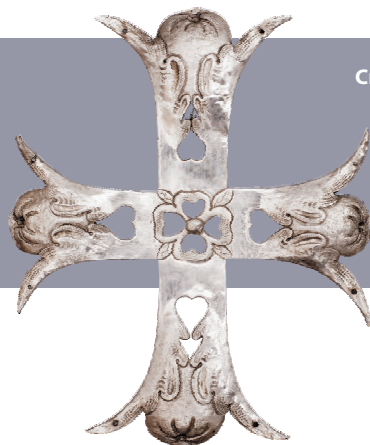
SOLI DEO GLORIA

PROTESTANT CULTURAL HERITAGE IN THE WSCHOWA REGION IN THE 16TH – 18TH CENTURY

Ministerstwo
Kultury
i Dziedzictwa
Narodowego



**Coffin portrait of Krystyna Szlichting
of the Gruszczyński family Poraj coat of arms**
accession no: MZW/S/21



Cross-shaped coffin fitting
accession no: MZW/S/212

**Inscription plaque of Zofia Radomicka
of the Ujejscy family Gryf coat of arms**
accession no: MZW/S/197



The main objective of the exhibition "Solī Deo Gloria. Protestant Cultural Heritage in the Wschowa region" is depicting Wschowa as an important intellectual centre which contributed to the incorporation of the culture of the Commonwealth of Poland into the so called European culture also as a place of tolerance and freedom for religious refugees forced to seek asylum in Poland.

The exhibition shows the richness of Protestant heritage including customary practices and Protestant art as well as the traditions of Polish dissenting gentry.

The exhibition houses 17th and 18th century memorabilia (such as coffin portraits, coat of arms and epitaph plaques) devoted to the members of the families of Szlichting, Potworowscy, Mielęccy and Haza Radlic who rendered great services to their country. There are also priceless artifacts from the crypt of Zofia of the Ujejscy family, the wife of Wschowa governor Hieronim Radomicki, elements of the interior of the Church of Christ's Crib (altar and pulpit sculptures), 17th-19th century portraits of pastors, old prints, baroque epitaphs and examples of stonework.

The modernization of the exhibition means, above all, the change in the display of museum pieces. Due to modern display systems, which are adjusted to the needs of present-day exposure, the safety of the exhibits has been enhanced. The implementation of the project allowed to improve the comfort of the visitors and highlight the esthetic value of the displayed artifacts.

An electronic version of the exhibition catalogue has been created and can be accessed from the e-gallery at the exhibition. The catalogue presents the museum collections as a selection of precious memorabilia as well as research material to be of interest of both the visitors and the representatives of scholars, historians and art historians. The catalogue will also be available in a printed version.

The modernization of the exhibition influenced its educational and promotional value. It complemented the offer of the Wschowa Land Museum and enabled an interactive presentation of the museum objects. The grand opening of the exhibition took place in November, 2014 in the museum building at Plac Zamkowy (Castle Square).